

Dynamics 365 Solutions

Armanino – Microsoft Dynamics 365 Advanced Warehousing Overview

MICROSOFT DYNAMICS 365 FSCM WAREHOUSE MANAGEMENT

Advanced Warehouse module design and flexibility:

- Adv. Warehouse module is a query-based WMS designed to build rules for each business process
- Adv. Warehousing is designed to maximum user productivity and reduce user decision making, while minimizing inventory movements.
- WMS can be implemented quickly with broad rule sets or built out with specific rules
- Queries can be built to leverage information across the platform with Advanced Queries joining SQL tables
- WMS includes a dedicated WMS App to support data validation with barcode scanning
- WMS supports inbound/outbound distribution and logistics, general inventory management practices, and production control (Discrete, Process, and Lean)





MICROSOFT DYNAMICS 365 FSCM WAREHOUSE MANAGEMENT

- Competes with Tier 1 WMS Solutions without the issues related to having a WMS Interface
- Seamless Inventory Transacting across the system, especially in Manufacturing
- Over 60 Features released since late 2019, including:

GS1 Barcode
Support

Cross Docking

Material
Handling
Equipment
Interface

Outbound
Sorting
(Pallet Build)

FIFO and LIFO
License Plate
Picking

System
Directed
Cluster Picking



MICROSOFT DYNAMICS 365 FSCM WAREHOUSE MANAGEMENT

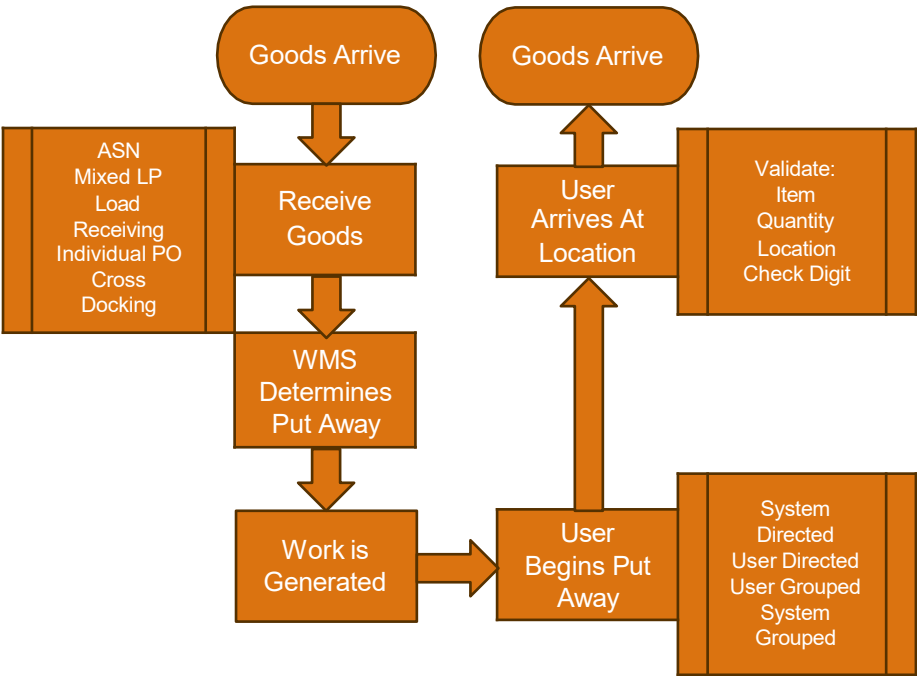
- **Warehouse Management Concepts**

- License plate (LP) - Moveable Inventory Dimension below Location
- Location Profiles and Zones – Location Characteristics and Grouping Mechanism
- Reservation Logic – Order Level and Work Level
- Location directive – What, How Many, and Where
- Wave template – Mechanism for Grouping Orders Together for Processing
- Work template – How we complete the Work
- RF configuration – Flexible and can be User Specific
- Inventory status dimension – Available, Quarantine, Inspection, etc.

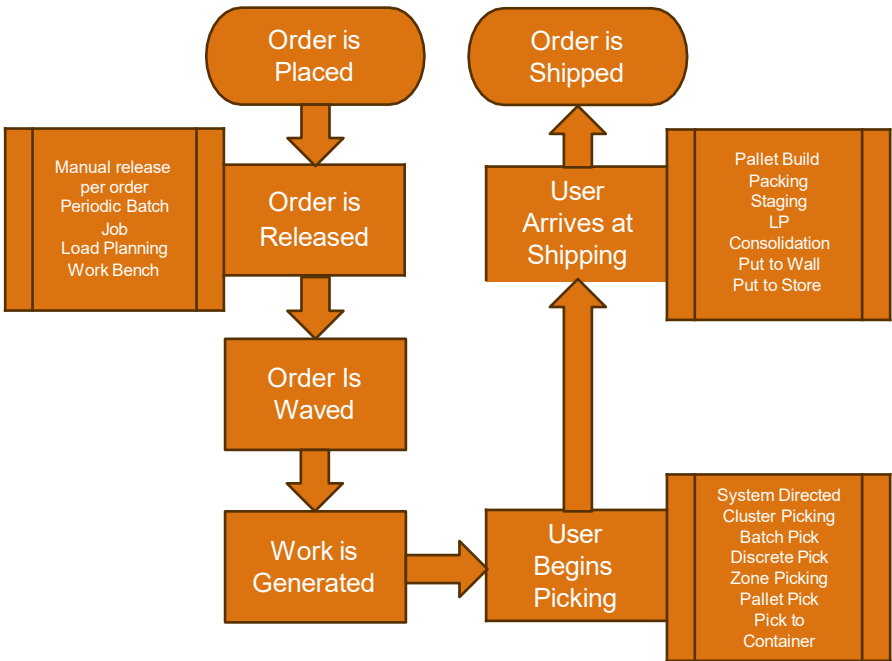


MICROSOFT DYNAMICS 365 FSCM WAREHOUSE MANAGEMENT

Inbound Process

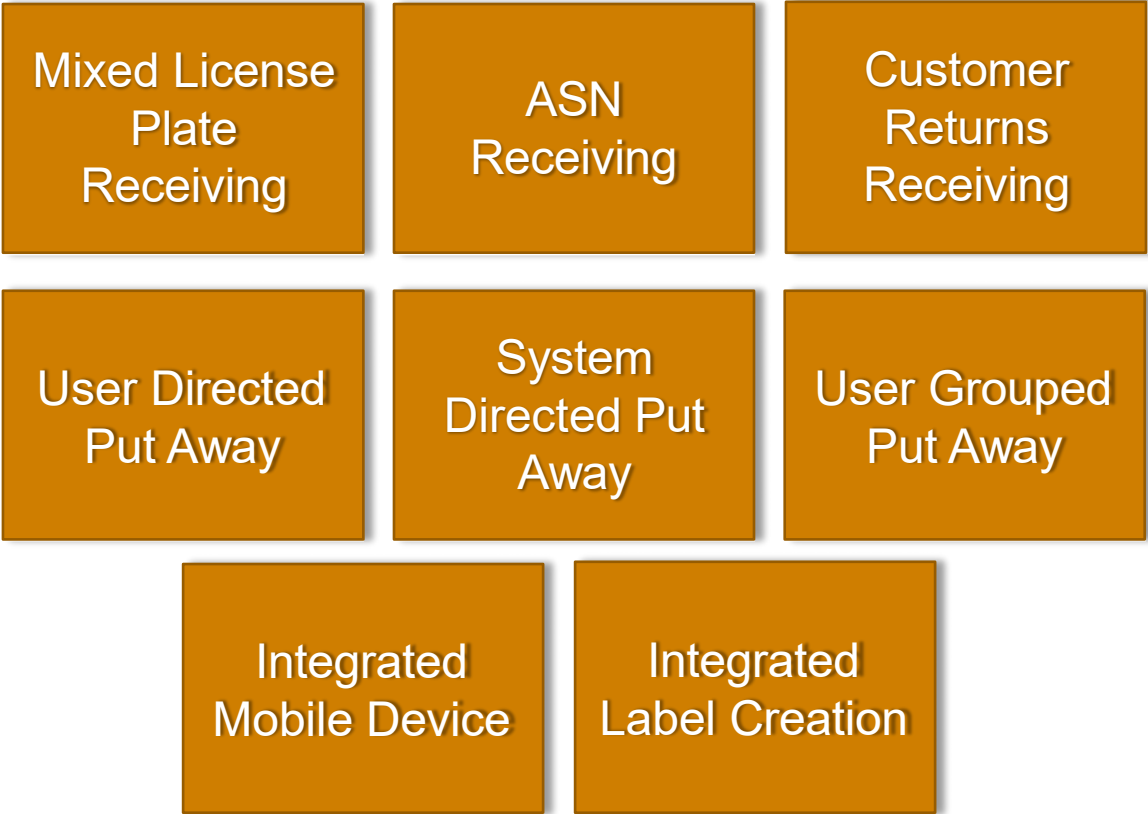


Outbound Process

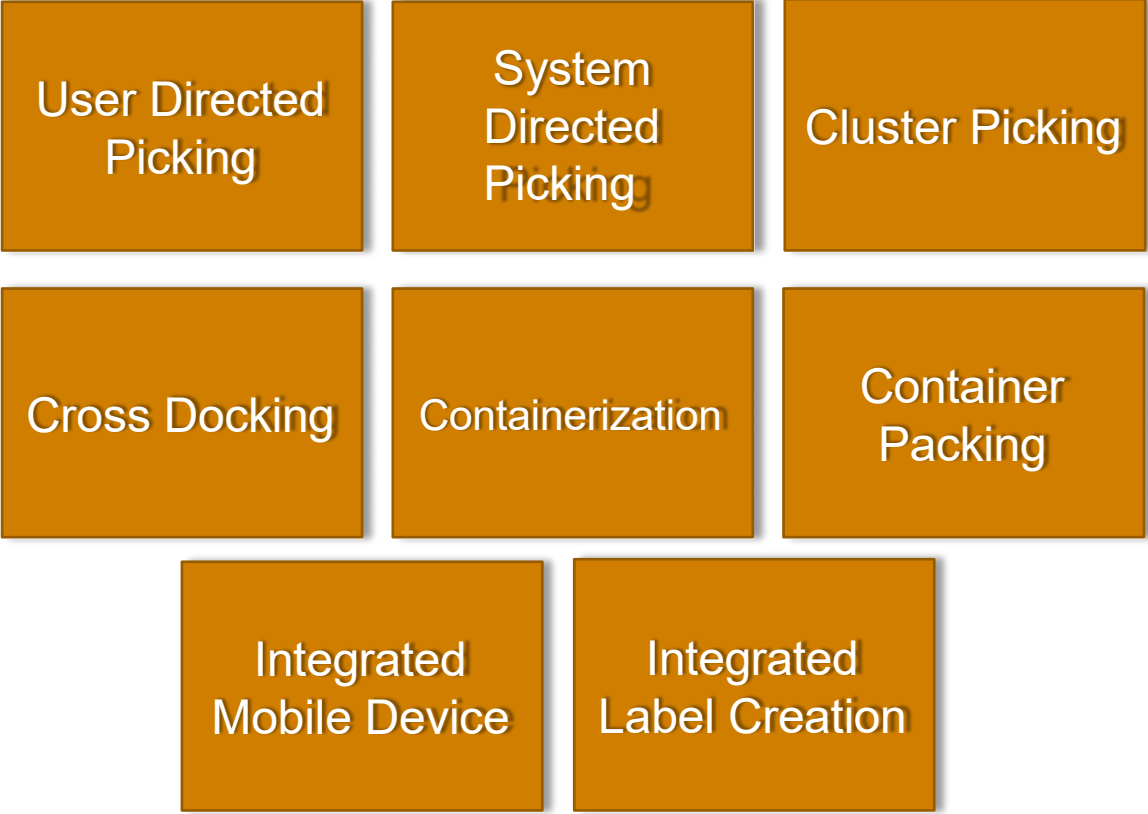


MICROSOFT DYNAMICS 365 FSCM WAREHOUSE MANAGEMENT

WMS Inbound Out of Box Functionality



WMS Outbound Out of Box Functionality



MICROSOFT DYNAMICS 365 FSCM WAREHOUSE MANAGEMENT

WMS Miscellaneous Inventory Out of Box Functionality

Location to
Location
Movements

Demand
Based Slotting

Item
Consolidation
Planning

Inventory
Status
Adjustments

Integrated
Quality Control

Labor
Standards

Min/Max
Based
Replenishment

Zone Based
Replenishment

Wave Based
Replenishment

Cycle Count
Plans

Threshold
Based Cycle
Counts

Inventory
Adjustments

Integrated
Mobile Device

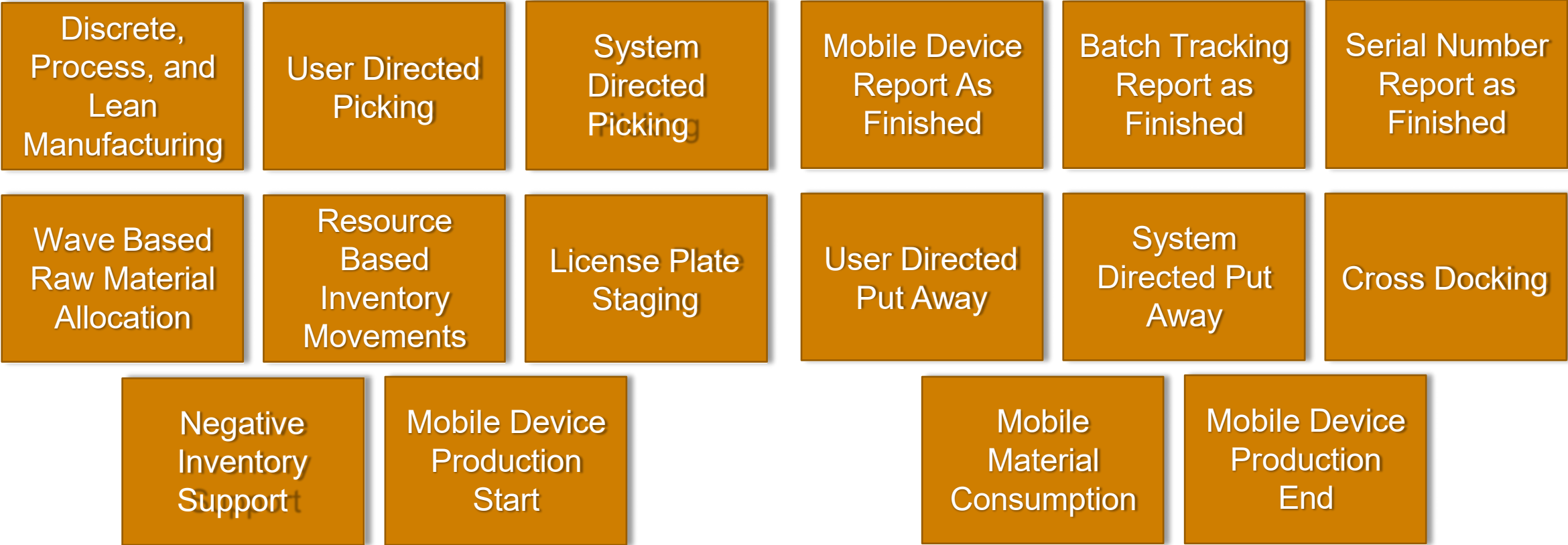
Integrated
Label Creation

User Directed
Cycle
Counting

System
Directed Cycle
Counting

MICROSOFT DYNAMICS 365 FSCM WAREHOUSE MANAGEMENT

WMS Production Out of Box Functionality



MICROSOFT DYNAMICS 365 FSCM WAREHOUSE MANAGEMENT

SCENARIO 1

Let's start with....

Material Demand from multiple floors of a Hospital building.

What we want to accomplish...

- Provide a variety of Items and Quantities
- Provide a variety of Units of Measure (ea, case, PL)
- Utilize different styles of picking
- Fulfill for the Various Floors of the Hospital
- Reduce errors with System-directed picking to fulfill the demand orders

With Dynamics 365 SCM Warehouse Management, we'll show...**Cluster Picking****Case Picking****Full PL Pick**

MICROSOFT DYNAMICS 365 FSCM WAREHOUSE MANAGEMENT

SCENARIO 2

With material on the way...



Put-away the material to the Supply rooms or closets on each floor

What we want to accomplish...

- Provide an easy, intuitive way for staff members or associates to receive the goods
- Reduce the amount of paperwork in the process
- Maintain an accurate count of inventory

With a Power App integrated to Dynamics 365 SCM Warehouse Management, we'll show...



A mobile application that quickly executes these material put-away activities and confirms transactions with the back-office

MICROSOFT DYNAMICS 365 FSCM WAREHOUSE MANAGEMENT

SCENARIO 3

With material on-hand...



We need to consume material for use on the hospital patient floors or operating rooms

What we want to accomplish...

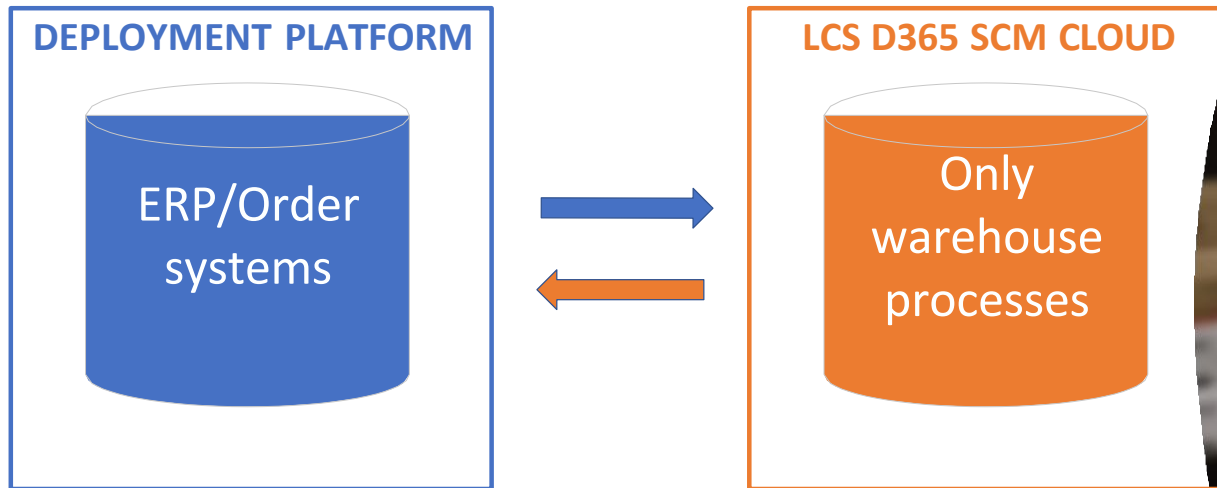
- Provide an easy, intuitive way for staff members or associates to consume material, track usage and align charge codes
- Reduce the amount of paperwork in the process
- Maintain an accurate count of inventory
- Automatically trigger re-orders or Request re-supplies

With a Power App integrated to Dynamics 365 SCM Warehouse Management, we'll show...

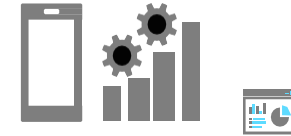
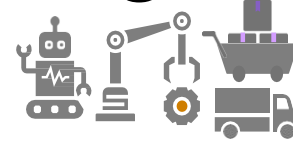
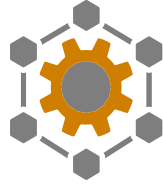
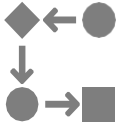


A mobile application that quickly consumes the inventory and supports inventory visibility, accuracy, and re-supply

Dynamics 365 SCM Warehouse Management only mode



The same Warehouse management capabilities



Rule engine
Flexible workflows



Integrated processes
Production, Procurement,
Quality, Retail, Project, Sales, Returns



Scanning
Guided paperless task
experience
Out of box



**Material handling &
Carrier Integration**
Integrate to automation and Carrier hubs



**Embedded
Analytics**
Gain advanced insights



**Continuous
updates**

Manufacturing(Discrete, Lean, Process, Mixed-mode), Automotive, eCommerce, Retail, Healthcare , Food, High-tech

**Inventory
Management**

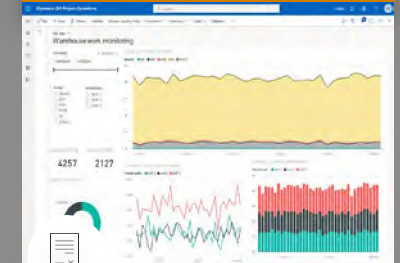
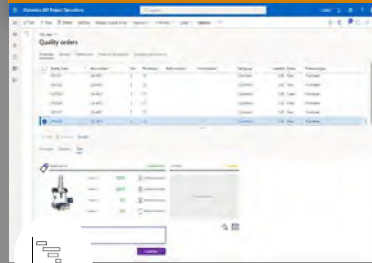
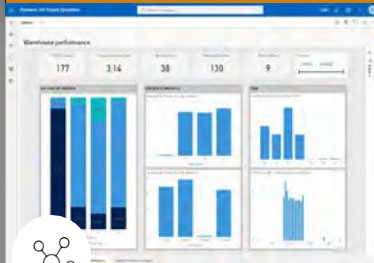
Inbound

Quality Management

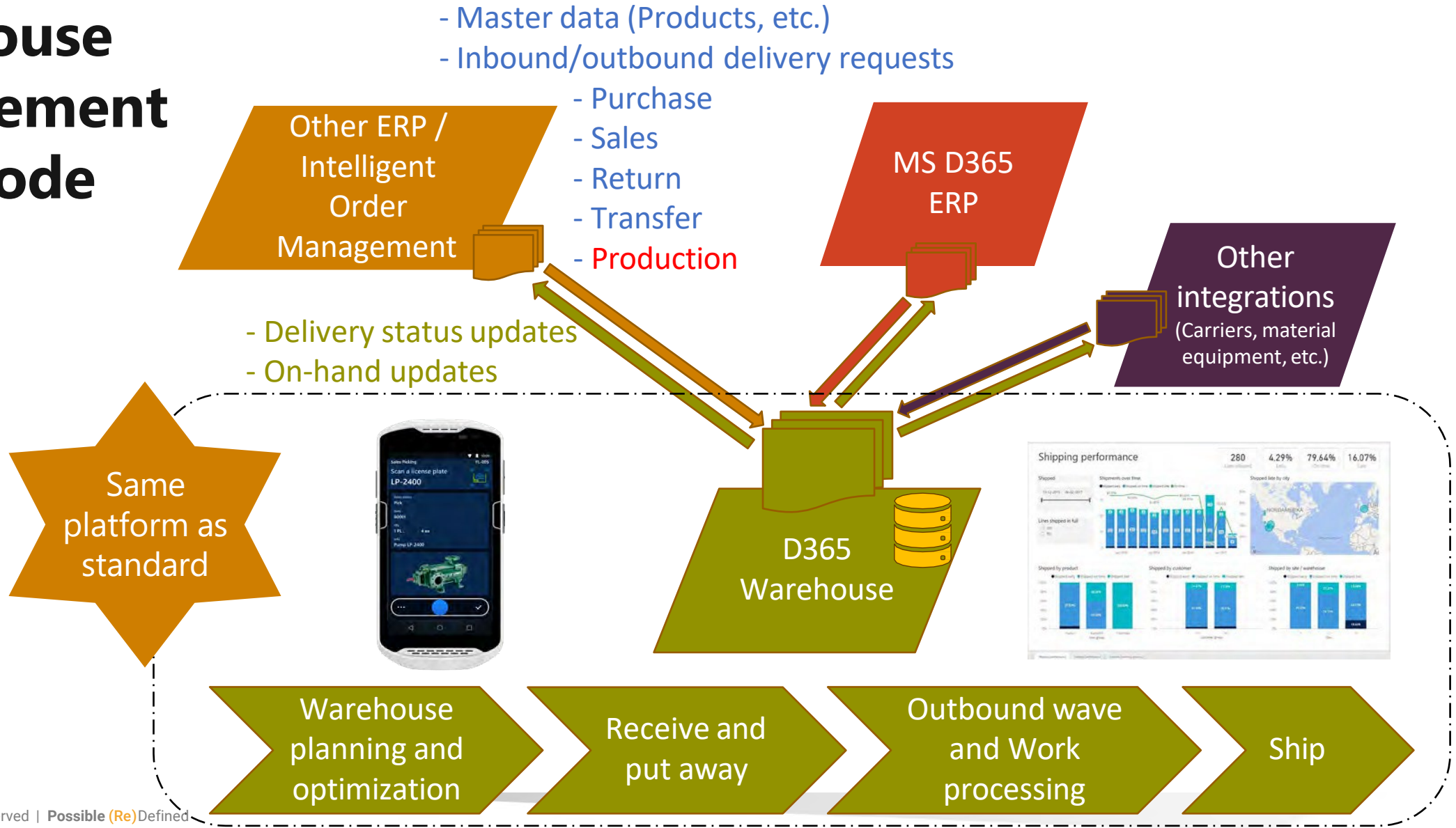
**Warehouse
Operations**

Outbound

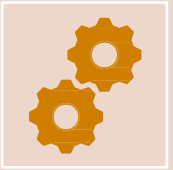
Labor management



Warehouse management only mode



Learning Resources – Warehouse Management Only mode



[Leverage Warehouse management only mode to optimize your business - Blog](#)



[Warehouse management only mode documentation](#)

Let's Start the Demo!

www.armanino.com

Armanino is a brand name under which Armanino LLP, Armanino CPA LLP, and Armanino Advisory LLC, independently owned entities, provide professional services in an alternative practice structure in accordance with law, regulations, and professional standards. Armanino LLP and Armanino CPA LLP are licensed independent CPA firms that provide attest services, and Armanino Advisory LLC and its subsidiary entities provide tax, advisory, and business consulting services. Armanino Advisory LLC and its subsidiary entities are not licensed CPA firms.