

November 17, 2022

Latest Updates in the Sage Intacct 2022 Release 4



WELCOME

Today's Presenters



Michelle Schimberg
Director, Experience: 30 years



Jennifer Jensen
Manager, Experience: 10 years

KNOWLEDGE

Learning Objectives



Identify new release features of your solution



Demonstrate the new user experience and navigation to ease adoption



Discuss a high-level overview of Sage Transform 2022

Exploring New Areas

Agenda

- Sage Transform 2022 Highlights
- Compliance
- Reporting
- Budgeting and Planning
- Construction
- Inventory Control & Order Entry
- Accounts Payable
- Lease Accounting
- Payroll
- Taxes
- Time & Expense
- User Experience
- Web Services

Transform 2022 Highlights Orlando, FL



TRANSFORM HIGHLIGHTS

Transform 2022 – In the books!



New Product Integration with Microsoft: Sage Intacct and Sage Active on Microsoft Azure give customers access to Sage Intacct in Microsoft Teams to simplify and automate workflows

Acquisition of Bright Pearl (Retail/Inventory Planner): Integration to Shopify, Amazon, 20+ apps; reduce supply chain inconsistencies + stock control

Upcoming industries: CRE/Manufacturing/Retail (some will require additional certs)



TRANSFORM HIGHLIGHTS

Transform 2022 – In the books!

What to look for in future releases

- **Partial ownership** Consolidations
- Enhanced **AP bill automation** with **1099** e-Filing
- Enhancements and integrations that will **reduce** supply chain inconsistencies and give us better stock control
- Enhancements to the **list user experience** with easier ways to query rather than build reports
- Redesigned data import and migration that will **simplify** error messages

Compliance



COMPLIANCE

Compliance made easier

Leveraging the experience of global audit experts, the Help Center provides a **new section** on Compliance.

Identifying **key compliance** areas **and** providing considerations and guidance to apply to your internal controls, use this information to better understand **audit considerations** and how they relate to the configurations within Sage Intacct.

The Sage Intacct audit experience

- Checklists for PBC documentation
- Dashboard to organize audit workpapers and reports
- System-generated allocations with drill-down
- Approval documentation
- Audit trail and audit history reports
- Compliance document storage: Board Minutes, Annual Reports, Org Charts, etc.



Note! This Idea came from the Intacct Community!

Reporting



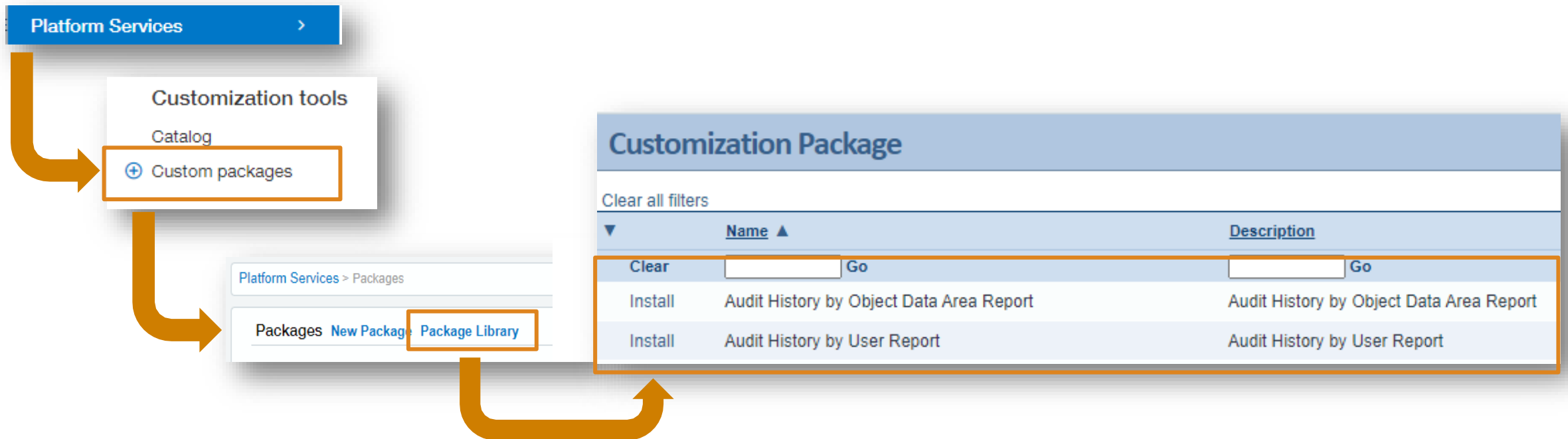
REPORTING

Audit History

Easier Compliance with Audit History Reports

Ability to access two Audit History reports for internal and external audit requirements

Install from Platform Services or Customization Services





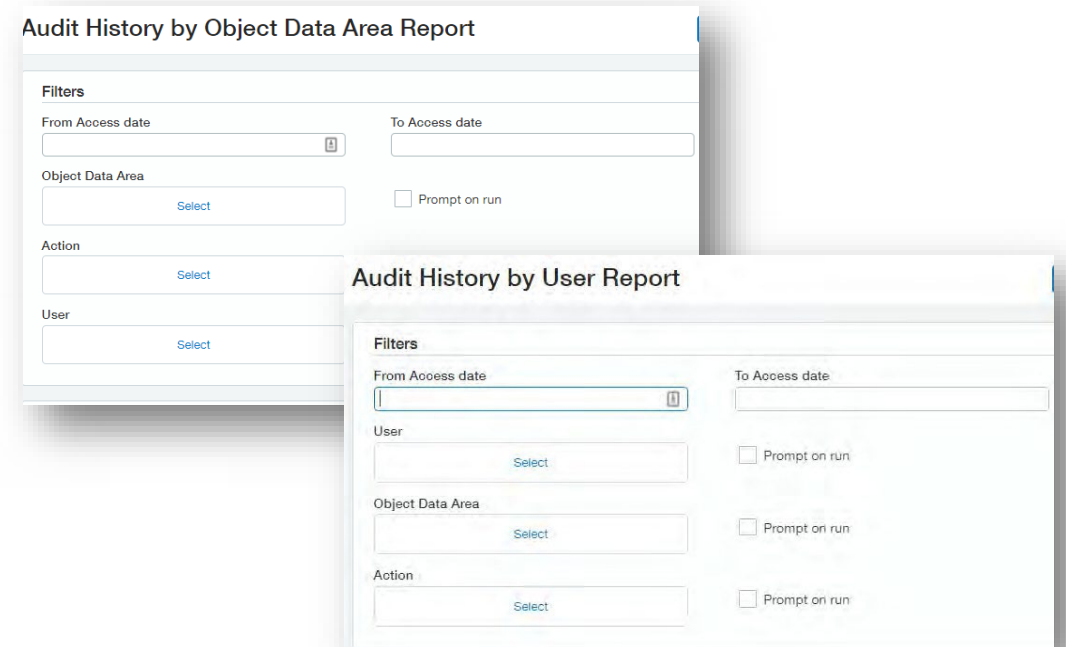
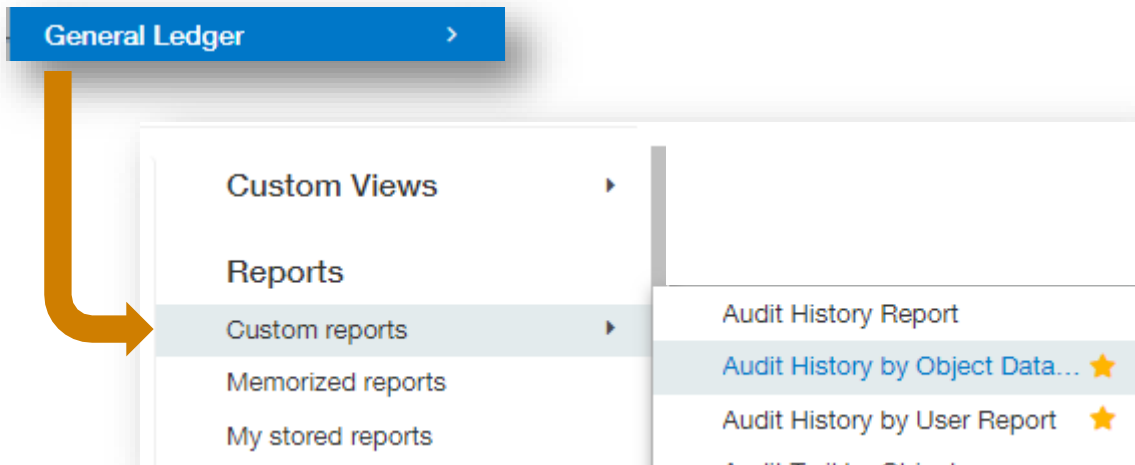
REPORTING

Audit History

Easier Compliance with Audit History Reports

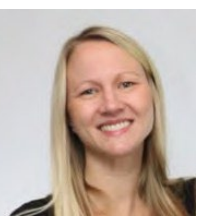
Ability to access two Audit History reports for internal and external audit requirements

Access from General Ledger



** To edit the installed report, duplicate the report and modify the copy*

Budgeting and Planning

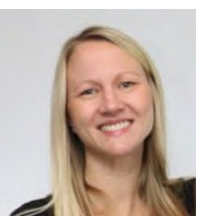


Note! This Idea came from the Intacct Community!

BUDGETING AND PLANNING

Enhancements using grid entry and Stat Accounts

- Grid entry provides the look and feel of a spreadsheet, making data entry a snap
 - Allows users to enter and adjust data within a **familiar** grid format
 - Easily **toggle** between the traditional form view and grid view
 - Quickly **enter data** in a specific cell or range of cells
 - Copy/paste from Excel **directly** into the grid
- Import statistical account data from Sage Intacct into Planning for improved data entry flexibility
 - Import or create non-monetary accounts to use in driver-based modeling
 - The new budget line type can be **created** manually or via SI integration
 - **Enhance** business planning and modeling using operational metrics
 - Freely move stat account data between **models and budgets** within Planning or push this data directly back to Intacct



BUDGETING AND PLANNING

Grid Entry

Note! This Idea came from the Intacct Community!

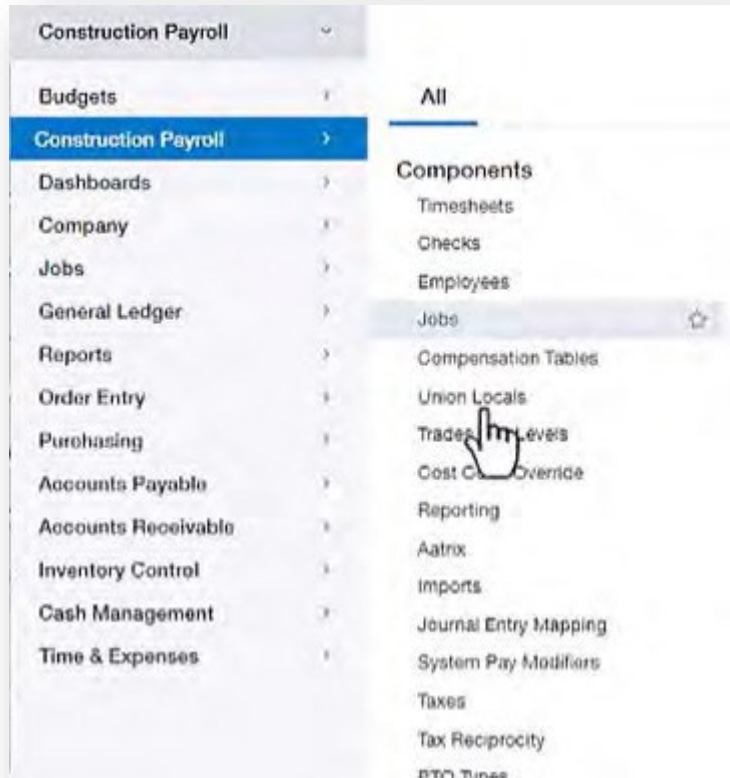
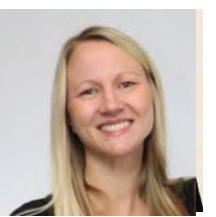
Example budget | Dashboard | Sheets | **Inputs** | Actuals

History | Scenarios | **Main** | Model | Tables

Budget Lines | P&L | Monthly | USD | Numbers | All Geographies | All Categories | All Departments | All Tags | All Accounts | Grid entry

	JAN 2016	FEB 2016	MAR 2016	APR 2016	MAY 2016	JUN 2016	JUL 2016	AUG 2016	SEP 2016	OCT 2016	TOTAL
Example budget	(\$113,938)	(\$116,412)	(\$59,807)	(\$110,636)	(\$90,131)	(\$48,845)	(\$88,104)	(\$77,491)	(\$18,693)	(\$44,090)	(\$15,159,2050)
Revenues	\$189,306	\$206,386	\$268,324	\$238,079	\$249,898	\$307,576	\$304,362	\$319,627	\$381,086	\$363,409	\$383,111,696,516
License and s... (200001)200002)	\$10,083	\$10,167	\$10,250	\$10,333	\$10,417	\$10,500	\$10,583	\$10,667	\$10,750	\$10,833	\$10,926,350
License and s... (300000)1300002)	\$0	\$0	\$44,815	\$370	\$370	\$45,185	\$741	\$741	\$45,556	\$1,111	\$1,111,388,815
Subscription - US (200047)	\$132,000	\$147,675	\$164,117	\$173,901	\$184,610	\$196,336	\$224,179	\$238,248	\$253,666	\$278,065	\$296,916,724
Subscription - EMEA (300052)	\$22,222	\$22,544	\$22,877	\$26,552	\$26,905	\$27,269	\$39,867	\$40,254	\$40,654	\$42,177	\$42,610,73,527
Professional se... (200003) Revenue	\$25,000	\$26,000	\$26,266	\$26,922	\$27,595	\$28,285	\$28,992	\$29,717	\$30,460	\$31,222	\$32,080,9,101
Cost of Revenues	(\$14,297)	(\$14,937)	(\$15,604)	(\$16,191)	(\$16,708)	(\$17,258)	(\$18,623)	(\$19,246)	(\$19,912)	(\$20,863)	(\$21,158,344)
Operational Expenses	(\$288,947)	(\$307,861)	(\$310,061)	(\$330,261)	(\$321,261)	(\$337,306)	(\$372,191)	(\$376,424)	(\$378,624)	(\$385,599)	(\$376,99,500,018)

Construction

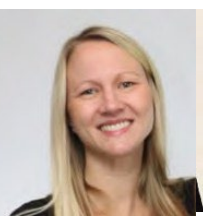


CONSTRUCTION

Early Adopters – Construction Payroll

- Handle self-performed **trade** payrolls with ease
- **Automate** complex payroll calculations and journal entry creation
- Simplify certified payroll **reporting** in all US states and territories
- Reduce cost overruns and improve the accuracy of future estimates with timely **visibility** into project labor costs
- **Harness** the power of your data for detailed reporting
- Assist with **state** payroll needs associated with union and non-union organizations

Contact your Client Manager, if you are interested in being an Early Adopter

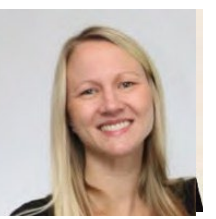


CONSTRUCTION

Sage Estimating (SQL) integration with Sage Intacct Construction

- Export estimates **directly** to Construction projects without having to re-enter estimate data
- Take advantage of the power of industry-leading Sage Estimating to **quickly** create accurate estimates and export them directly to Sage Intacct. With this integration, there's no need to **re-enter data**

Contact your Client Manager, if you are interested in Sage Estimating (SQL)

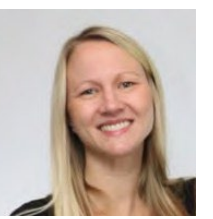


CONSTRUCTION

Sage Estimating Features

- The flow of information between Sage Estimating and Sage Intacct Construction is governed by **Job Cost** Information settings. You select Job Cost Information **settings** for the estimate or the standard database in Sage Estimating and by settings that you select during an export
 - **Flexible**, adaptable takeoff
 - Ability to keep **bids** competitive and profitable, even during inflationary periods
 - Ability to **view** estimates in ways that are important to you
 - **Powerful** reporting

Inventory Control & Order Entry



ORDER ENTRY AND INVENTORY

Early Adopter – Fulfillment for Sales Order Management

- Fulfillment was launched under the **Early Adopter** program in 2022 Release 2 and **continues** to be available under the Early Adopter program in this release

Contact your Client Manager, if you are interested in being an Early Adopter

Accounts Payable



Accounts Payable

Bank File Payments

Bank files are now more robust and flexible to support your unique business needs

- Pay AP **Advances** using bank file payments as a payment method (supported currencies AUD, EUR, GBP or ZAR)
- Pay vendors in France and Ireland (in Euro) via bank file payments with the **SEPA** bank file format

The screenshot shows the 'Accounts Payable' section of a software application, specifically the 'AP Advances' form. The form includes several fields and a dropdown menu:

- Advance date ***: 10/27/2022
- Base Currency**: GBP
- Payment Method ***: ACH / Bank File (selected in a dropdown menu that also lists Check, Charge Card, Record transfer, and Cash)
- Supplier ***: (empty dropdown)
- Exchange Rate Type**: Intacct Daily Rate
- Bank ***: BAR--Barclays Bank(GBP)

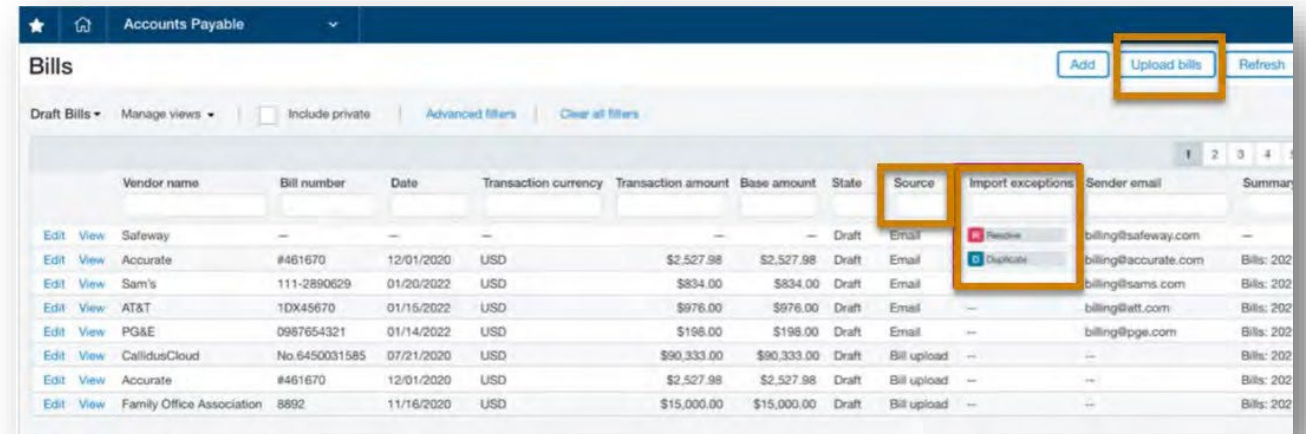
At the bottom of the form, there are labels for 'Account *', 'Transaction amount *', 'Base amount', and 'Departn'.



ACCOUNTS PAYABLE

Limited Release R4 2022: AP Automation

- Uses OCR to **capture** data from your PDF vendor invoice and creates a draft bill using AI
- **Upload** or email bills into Intacct
- **Automatically** attaches the vendor invoice PDF
- Leverages **GL Outlier** to report Exceptions



	Vendor name	Bill number	Date	Transaction currency	Transaction amount	Base amount	State	Source	Import exceptions	Sender email	Summary
Edit View	Safeway	-	-	-	-	-	Draft	Email	Resolve	billing@safeway.com	-
Edit View	Accurate	#461670	12/01/2020	USD	\$2,527.98	\$2,527.98	Draft	Email	Duplicate	billing@accurate.com	Bills: 202
Edit View	Sam's	111-2890629	01/20/2022	USD	\$834.00	\$834.00	Draft	Email		billing@sams.com	Bills: 202
Edit View	AT&T	1DX45670	01/15/2022	USD	\$976.00	\$976.00	Draft	Email		billing@att.com	Bills: 202
Edit View	PG&E	0987654321	01/14/2022	USD	\$198.00	\$198.00	Draft	Email		billing@pge.com	Bills: 202
Edit View	CallidusCloud	No 6450031585	07/21/2020	USD	\$90,333.00	\$90,333.00	Draft	Bill upload		--	Bills: 202
Edit View	Accurate	#461670	12/01/2020	USD	\$2,527.98	\$2,527.98	Draft	Bill upload		--	Bills: 202
Edit View	Family Office Association	8692	11/16/2020	USD	\$15,000.00	\$15,000.00	Draft	Bill upload		--	Bills: 202

Releases in 2023 - Only applicable to US-based Companies that do not have HIPAA requirements

Lease Accounting



LEASE ACCOUNTING

Sage Intacct Lease Accounting—Early Adopter

- Sage Intacct Lease Accounting is a new application that allows lessees to manage their financial and operating leases to comply with the latest **US GAAP** or **IFRS standards**.
 - Provides lessee-side lease tracking and accounting **automation** for operating leases with the latest ASC 842 and IFRS 16 standards
 - **Centralize** and **manage** lease contracts
 - **Automate** accounting recognition
 - **Tie** lease liabilities to right-of-use assets
 - Ensure **compliance** with updated accounting standards

Contact your Client Manager, if you are interested in being an Early Adopter

Payroll

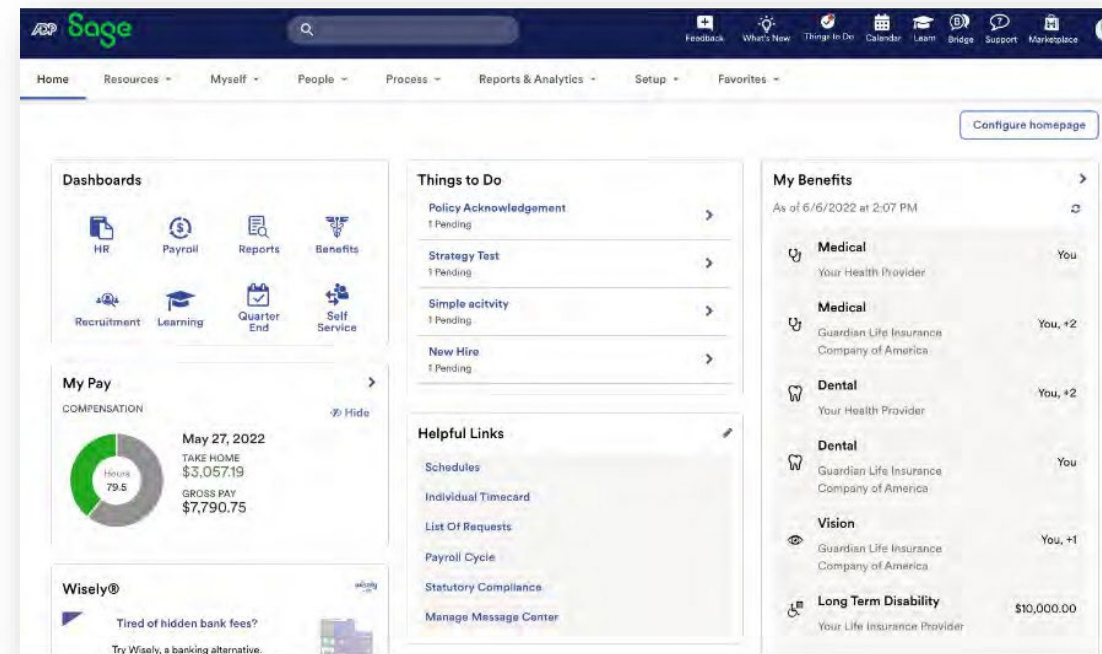


Note! This Idea came from the Intacct Community!

PAYROLL

Announcing Sage Intacct Payroll powered by ADP

- Sage Intacct Payroll is a best-in-class payroll and human capital management (HCM) solution that integrates seamlessly with Sage Intacct
 - **Journal Entries** flow from payroll to Sage Intacct
 - **Employee adds** and **changes** flow payroll to Sage Intacct
 - Sage Intacct **Time and Expense reports** flow to payroll for reimbursement
 - **Dimension values** flow to Payroll Time and attendance labor charge fields



Contact your Client Manager, if you are interested in this subscription

Taxes



TAXES

1099S

- Forms are **available** now!
- Order at <http://intacct.dsa-direct.com/default.aspx>
- **Reminder:** Preparation is key! Find steps in help ->

Taxes > [1099s](#) > Update 1099 information

Update 1099 information

Update existing 1099 amounts and default forms and boxes for vendors and employees.

In this section:

[Edit company or entity 1099 payer information](#)

[Update vendor 1099 amounts](#)

[Update employee 1099 amounts](#)

[Update or remove 1099 form and box for a vendor](#)

[Update or remove 1099 form and box for an employee](#)

[Update existing vendor 1099 transactions with an import file](#)

[Update non-1099 transactions with a 1099 form and box](#)



TAXES

Coming soon—1099 e-filing powered by TaxBandits

- 1099 e-filing **integration** with TaxBandits
- Limited Release coming soon



Time & Expenses



TIME & EXPENSES

Sage Intelligent Time expands support to nonprofits that subscribe to grant tracking

- Nonprofit organizations can **automatically** track staff time, simplifying time accounting
- Sage Intelligent Time has **launched** to international customers
- **Empower** program staff to focus on project delivery instead of time-capture
- Automate the capture of reimbursable time with down-to-the-minute **precision**
- Receive electronic statements of time spent to **satisfy** single-audit requirements

Sage Intelligent Time R4 Highlights

1. Now Available with Grant Tracking

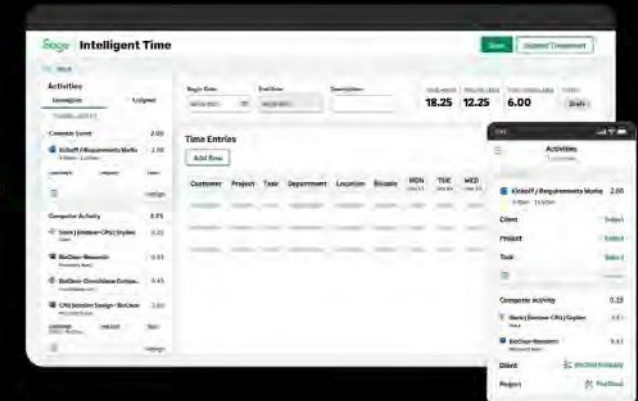
- Refined to meet nonprofit needs
- Keep program staff focused on delivery, not time capture
- Electronic affirmation for single-audit

2. Project Costing and Billing Updates

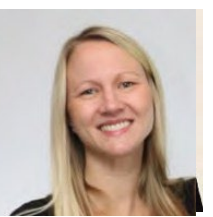
- Fine-tuned for greater performance
- Capture every billable minute
- Increase accuracy of true job costs and future bids

3. International rollout

- Now available in Canada, South Africa, and Australia



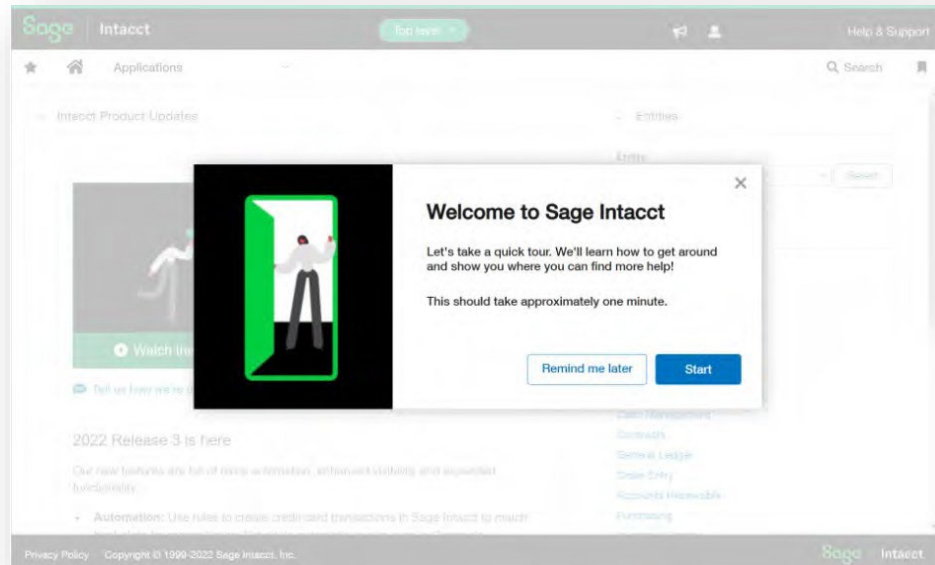
User Experience



USER EXPERIENCE

Get started with Intacct

- We added a short getting started **tour** to get familiar with navigating Sage Intacct and where to find help, training, and videos for new users
- Information available [New to Sage Intacct](#)
 - Keyboard **Shortcuts**
 - **Customizing** your workspace
 - Understand **Permissions**
 - Find things fast



Web Services



WEB SERVICES

Dev Portal

- **Watch** the Sage Intacct Developers portal blog to stay up-to-date on great new **features** in Web Services
 - There are no functional changes to the Intacct XML API in 2022 R4

<https://developer.intacct.com/>

Armanino Led Intacct Virtual Classes

Whether you have new employees that need to get up to speed quickly, or simply need to learn more about the features and functionality of Sage Intacct, check out our [Armanino Academy!](#)





Thank you for attending
Additional Questions?

Reach out to us at

Experts@armanino.com

Armanino Operates in an Alternative Practice Structure:

“Armanino” is the brand name under which Armanino LLP, Armanino CPA LLP, and Armanino Advisory LLC, independently owned entities, provide professional services in an alternative practice structure in accordance with law, regulations, and professional standards. Armanino LLP and Armanino CPA LLP are licensed independent CPA firms that provide attest services, and Armanino Advisory LLC and its subsidiary entities provide tax, advisory, and business consulting services. Armanino Advisory LLC and its subsidiary entities are not licensed CPA firms.